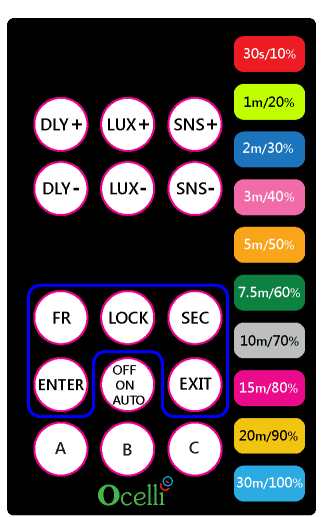


Features



Remote Control Features

Sensitivity	Brightness	Time Delay	Security	Partial On
Presentation Mode	Partial Off	Load Maintenance	FailSafe Mode	CFL
Coverage Test	ON Demand Mode	Burn-In	Cascade Operation	Future Proof
Settings Storage	Factory Reset	Remote Access	Child Lock	Visual Cue



**TIME DELAY**  
 DLY+ : To increase Time Delay  
 DLY- : To decrease Time Delay

**BRIGHTNESS**  
 LUX+ : To increase Lux level  
 LUX- : To decrease Lux level

**SENSITIVITY**  
 SNS+ : To increase Sensitivity level  
 SNS- : To decrease Sensitivity level

**SECURITY**  
 SEC+ENTER : To Enable Security Mode  
 SEC+EXIT : To Disable Security Mode

**On-Demand Mode**  
 This mode is used to provide on-demand lighting. User can select three different mode of the sensor. 'Always OFF' mode indicated by RED color LED indication; 'Always ON' mode indicated by GREEN color LED indication; 'Auto' mode indicated by YELLOW color LED indication.

**FACTORY RESET**  
 FR+ENTER : Factory settings  
 FR+EXIT : Remote Settings

**LOCK/UNLOCK**  
 LOCK+ENTER : To Lock Remote  
 LOCK+EXIT : To UnLock Remote



**Business Office:**  
 Ocelli Systems Private Limited,  
 2/8, First Floor, 80 Feet Road,  
 Indiranagar,  
 Bangalore - 560038  
 Tel : 080-4152-3012  
 E-mail : support@ocellisystems.com  
[www.ocellisystems.com](http://www.ocellisystems.com)



Proud to Make in INDIA



ThirdEye Energy Saving Sensors

Save Energy Today for a Better Tomorrow

# Ceiling Sensor

## Variants

- IOCHCW-WR1 / IOFHCW-WR1 Occupancy and Light Sensor
- IVCHCW-WR1 / IVFHCW-WR1 Vacancy and Light Sensor
- ITCHCW-WR1 / ITFHCW-WR1 ThreeWay and Light Sensor
- INCHCW-WR1 / INFHCW-WR1 Occupancy Only Sensor
- ILCHCW-WR1 / ILFHCW-WR1 Light Only Sensor
- ICCHCW-WR1 Cascade and Light Sensor



# Wall Sensor

## Variants

- IOWHCW-WR1 Occupancy and Light Sensor
- IWWHCW-WR1 Vacancy and Light Sensor
- ITWHCW-WR1 ThreeWay and Light Sensor
- ICWHCW-WR1 Cascade and Light Sensor
- INWHCW-WR1 Occupancy Only Sensor
- ILWHCW-WR1 Light Only Sensor



## Variants

- IOSHCW-WR1 Occupancy and Light Sensor
- IVSHCW-WR1 Vacancy and Light Sensor
- ITSHCW-WR1 ThreeWay and Light Sensor
- ICSHCW-WR1 Cascade and Light Sensor
- INSHCW-WR1 Occupancy Only Sensor
- ILSHCW-WR1 Light Only Sensor



### Ceiling Sensor

- Coverage Area: 450 Sq.ft
- Installation Height: 8 ft

### HighBay Sensor

- Coverage Area: 5000 Sq.ft
- Installation Height: 40 ft

### Wall Sensor

- Coverage Area: upto 75 ft
- Installation Height: 6.8 ft

### Corridor Sensor

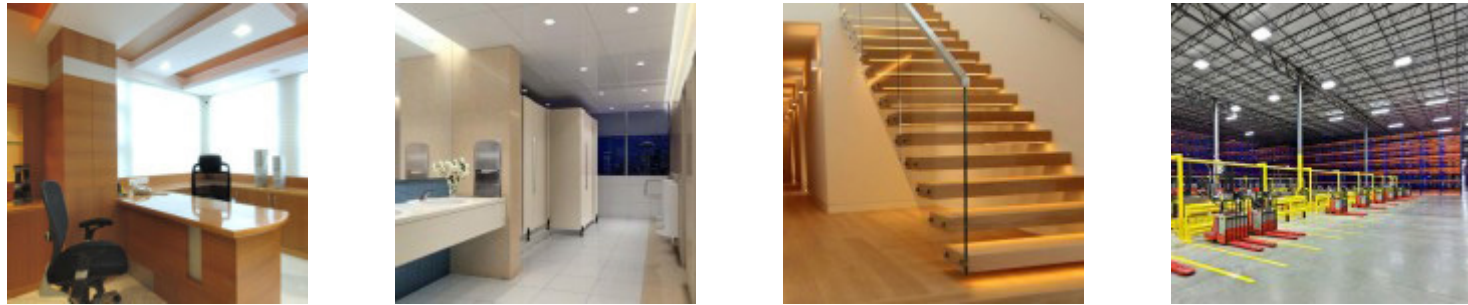
- Coverage Area: upto 75 ft
- Installation Height: 6.8 ft

### Socket Sensor

- Coverage Area: upto 32 ft
- Installation Height: 6.8 ft

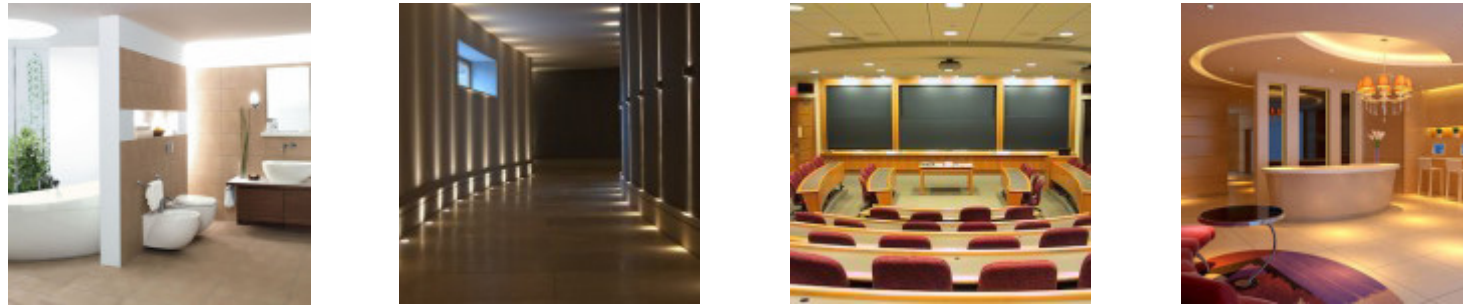
### Preferred Install Locations

Suitable for Individual Cabins, Rest Rooms, Stairs, WareHouses, Residential



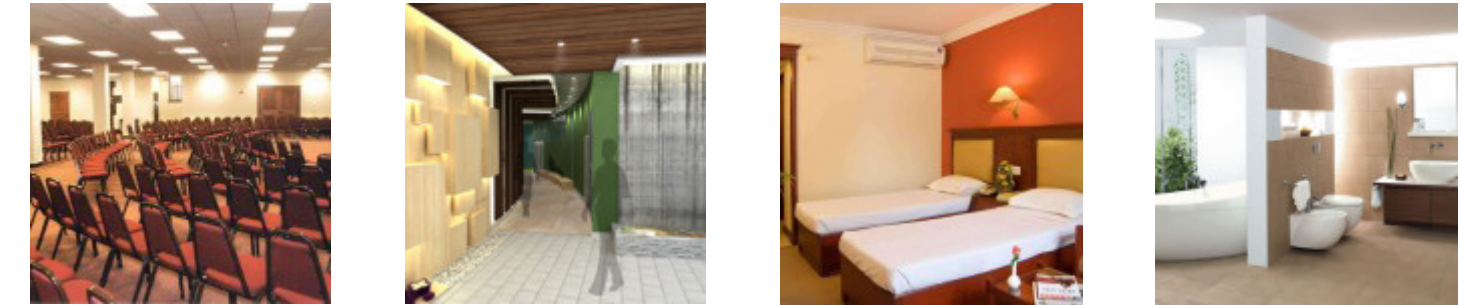
### Preferred Install Locations

Suitable for Lobbies, Waiting Rooms, Class rooms, Individual Cabins, Rest Rooms, Meeting Hall



### Preferred Install Locations

Suitable for Corridors, Warehouses, High bay spaces, Gymnasiums, Distribution Centers



Lux:10-2000lux

Time:30s-30mins

Indoor Only

Vacancy Mode

ThreeWay Mode

Light Sensor

Storage

Volt:85-265VAC

Load:2000W